

# RESISTANCE WELDING ELECTRODE

## Backup Electrode

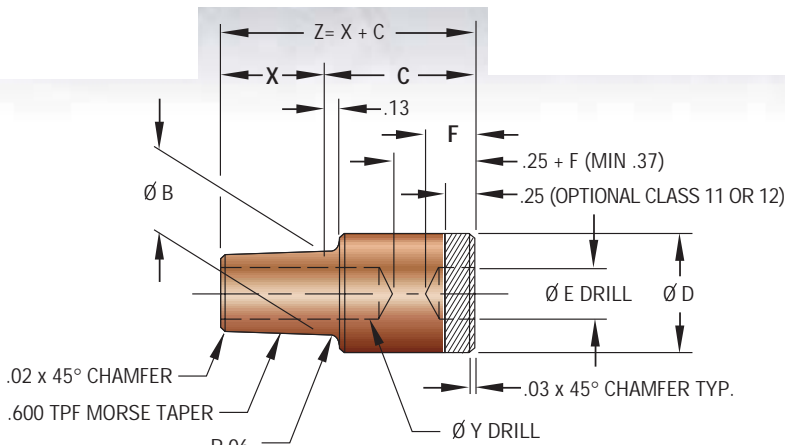
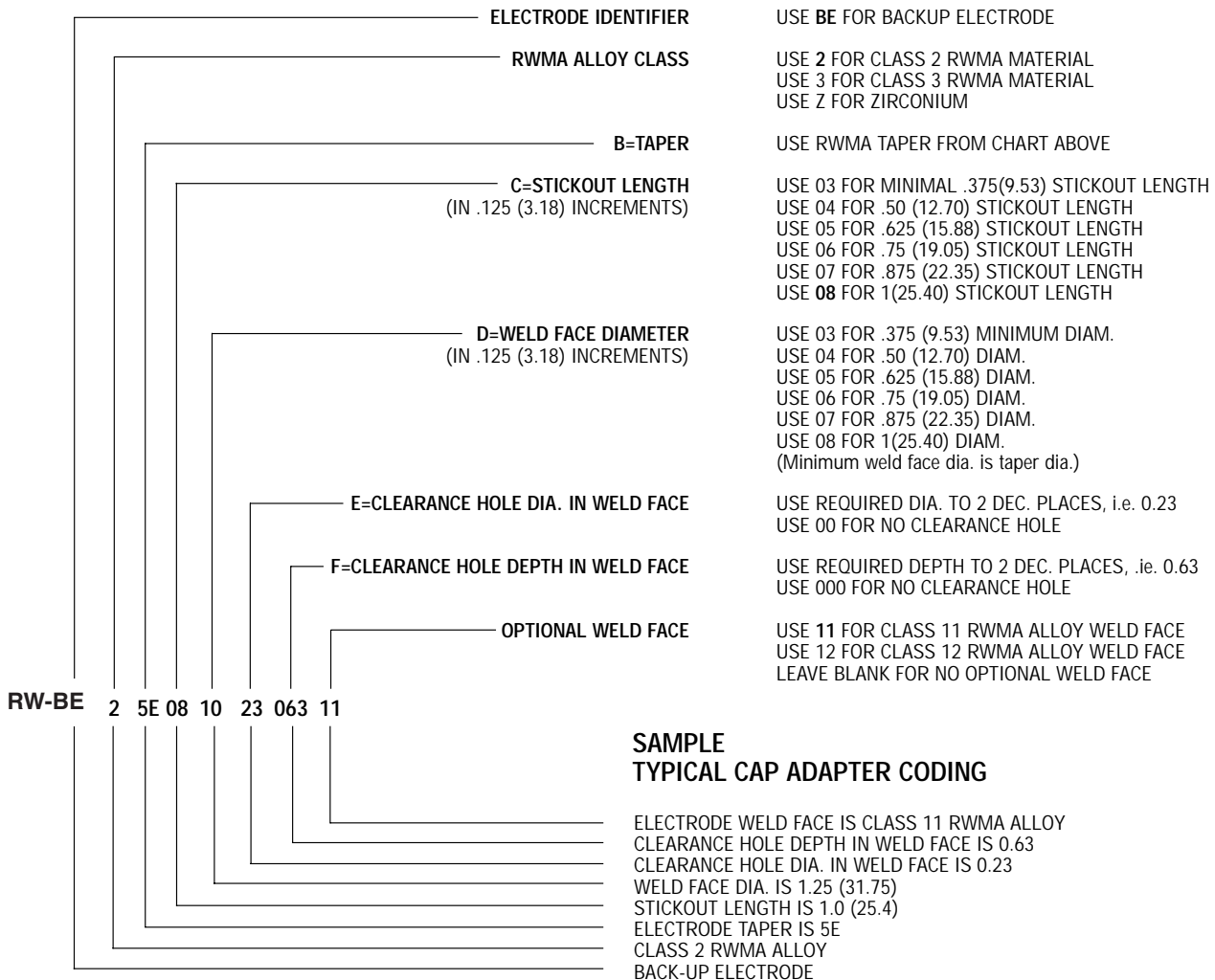


FIGURE 4-8 (Material RWMA Class 2&3)

RWMA TAPER	B	X	Y
3E	.375 (9.52)	.500 (12.70)	9/32
4E	.463 (11.76)	.500 (12.70)	9/32
5E	.625 (15.88)	.750 (19.05)	3/8
6E	.750 (19.05)	.875 (22.23)	7/16
7E	.875 (22.23)	1.125 (28.57)	1/2
4C	.375 (9.52)	.312 (2.86)	9/32
5C	.414 (10.52)	.375 (9.52)	5/16
6C	.500 (12.70)	.500 (12.70)	3/8
7C	.613 (15.57)	.500 (12.70)	1/2

### EXAMPLE EXPLANATION CODING



Resistance Welding Machine & Accessory

Voice: 269-428-4770 Fax: 269-428-4796

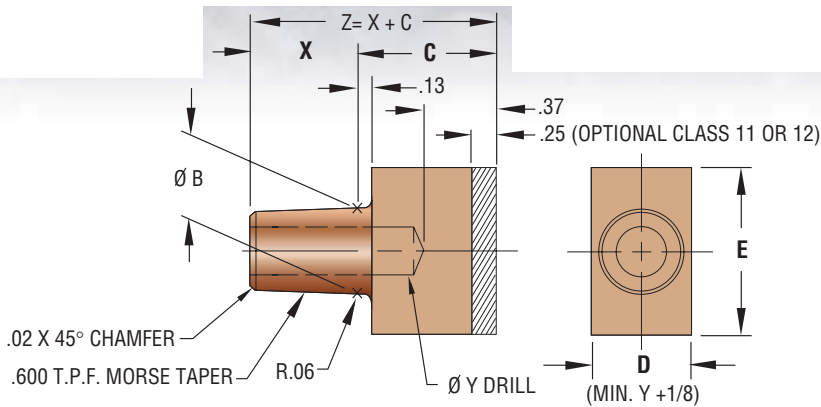
Express Orders: 800-915-9353

Visit Our Website at: [www.resweld.com](http://www.resweld.com)



# RESISTANCE WELDING ELECTRODE

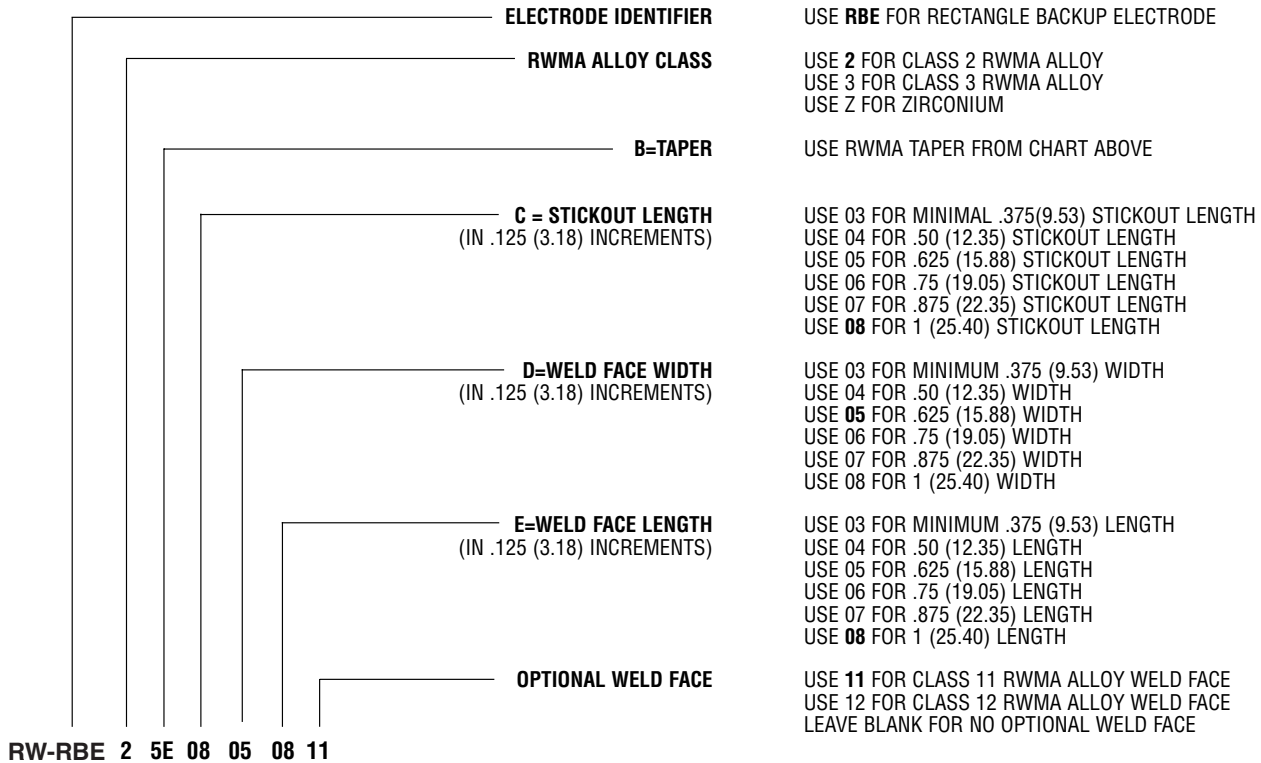
## Block Type Electrode



RWMA TAPER	B	X	Y
3E	.375 (9.52)	.500 (12.70)	9/32
4E	.463 (11.76)	.500 (12.70)	9/32
5E	.625 (15.88)	.750 (19.05)	3/8
6E	.750 (19.05)	.875 (22.23)	7/16
7E	.875 (22.23)	1.125 (28.57)	1/2
4C	.375 (9.52)	.312 (2.86)	9/32
5C	.414 (10.52)	.375 (9.52)	5/16
6C	.500 (12.70)	.500 (12.70)	3/8
7C	.613 (15.57)	.500 (12.70)	1/2

FIGURE 4-9 (Material RWMA Class 2&3)

### EXAMPLE EXPLANATION CODING



### SAMPLE TYPICAL CAP ADAPTER CODING

ELECTRODE WELD FACE IS CLASS 11 RWMA ALLOY  
 WELD FACE LENGTH IS 1.0 (25.4)  
 WELD FACE WIDTH IS 1.0 (25.4)  
 STICKOUT LENGTH IS 1.0 (25.4)  
 ELECTRODE TAPER IS 5E  
 CLASS 2 RWMA ALLOY  
 RECTANGLE BACK-UP ELECTRODE

Resistance Welding Machine & Accessory

Voice: 269-428-4770 Fax: 269-428-4796

Express Orders: 800-915-9353

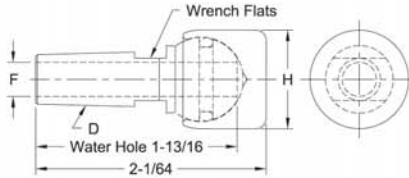
Visit Our Website at: [www.resweld.com](http://www.resweld.com)



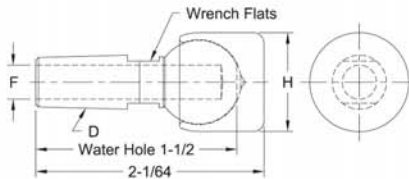
# BACK-UP ELECTRODES

## SWIVEL HEAD BACK-UP ELECTRODES

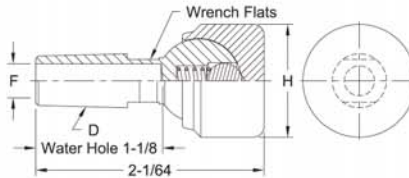
PART No.	Taper D	Water Hole Dia. F	Face Dia. H	Type
16-2304	4 RW	9/32	7/8	Thru hole with "O" ring
16-2305	5 RW	3/8		
16-2302	4 RW	9/32	1	
16-2303	5 RW	3/8		
16-2300	4 RW	9/32	1-1/4	
16-2301	5 RW	3/8		
16-2306	5 RW	3/8	1-1/2	



PART No.	Taper D	Water Hole Dia. F	Face Dia. H	Type
16-2314	4 RW	9/32	7/8	Blind hole
16-2315	5 RW	3/8		
16-2312	4 RW	9/32	1	
16-2313	5 RW	3/8		
16-2310	4 RW	9/32	1-1/4	
16-2311	5 RW	3/8		
16-2316	5 RW	3/8	1-1/2	

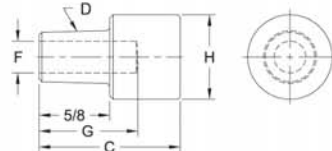


PART No.	Taper D	Water Hole Dia. F	Face Dia. H	Type
16-23129	4 RW	9/32	1	Blind hole with spring and ball
16-23139	5 RW	3/8		
16-23109	4 RW	9/32	1-1/4	
16-23119	5 RW	3/8		
16-23169	4 RW	9/32	1-1/2	
16-23179	5 RW	3/8		

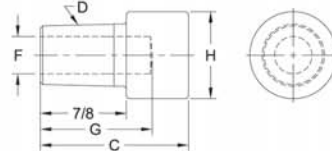


## LARGE DIAMETER FLAT FACED BACK-UP ELECTRODES

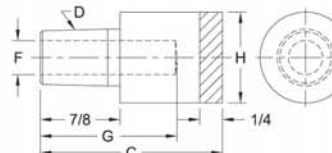
PART No.	Weld Face Material	O.A.L. C	Taper D	Water Hole		Weld Face Dia. H
				Dia. F	Depth G	
16-3012	CMW*3	1-1/4	4 RW	9/32	7/8	3/4
16-3010						1
16-3030						1-1/4



PART No.	Weld Face Material	O.A.L. C	Taper D	Water Hole		Weld Face Dia. H
				Dia. F	Depth G	
16-3021	CMW*3	1-1/2	5 RW	3/8	1-1/8	7/8
16-3020						1
16-3040						1-1/4
16-3050						1-1/2

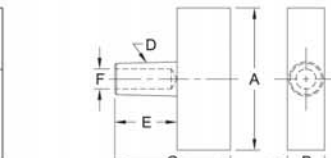


PART No.	Weld Face Material	O.A.L. C	Taper D	Water Hole		Weld Face Dia. H
				Dia. F	Depth G	
16-1392	ELKONITE* 10W3	3-1/4	5 RW	3/8	1-1/2	1
16-1393						5/8
16-1394						1-1/2
16-1395						5/8

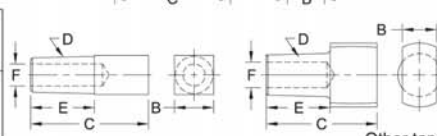


## SQUARE & RECTANGULAR FACED BACK-UP ELECTRODES

PART No.	Weld Face Material	O.A.L. C	Taper D	Shank Length E	Water Hole Dia. F	Weld Face Lgth. A	Weld Face Width B
16-3111	5/8						
16-382160	1-1/2						
16-3121	5/8						



PART No.	Weld Face Material	O.A.L. C	Taper D	Shank Length E	Water Hole Dia. F	Weld Face Lgth. A	Weld Face Width B
16-3120	5/8						
16-384110	15/16						



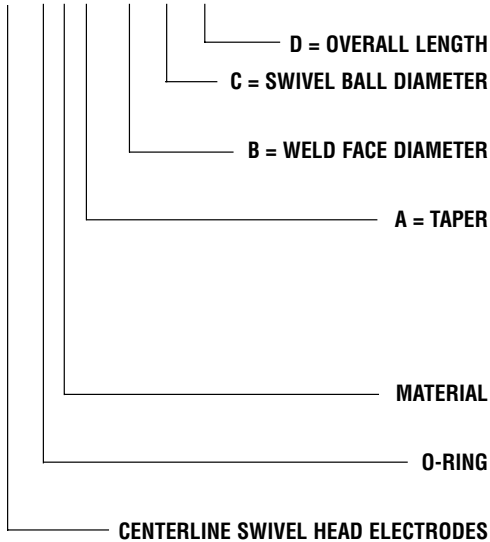
Other tapers and alloys available to special order



# RESISTANCE WELDING ELECTRODE

## Swivel Head Electrodes with Water-Cooled Shanks

RW-SHEA O 2 5E XXX 75 YYY



SPECIFY REQUIRED LENGTH, EX. FOR 2.00 (50.80) USE 200

USE 50 FOR .50 (12.70) DIAMETER  
 USE 75 FOR .75 (19.05) DIAMETER

SPECIFY REQUIRED DIAMETER, EX. FOR 1.00 (25.40) DIAMETER  
 USE 100

USE 5C FOR #5 CAP TAPER  
 USE 6C FOR #6 CAP TAPER  
 USE 4E FOR 4RW TAPER  
 USE 5E FOR 5RW TAPER  
 USE 6E FOR 6RW TAPER  
 USE 7E FOR 7RW TAPER

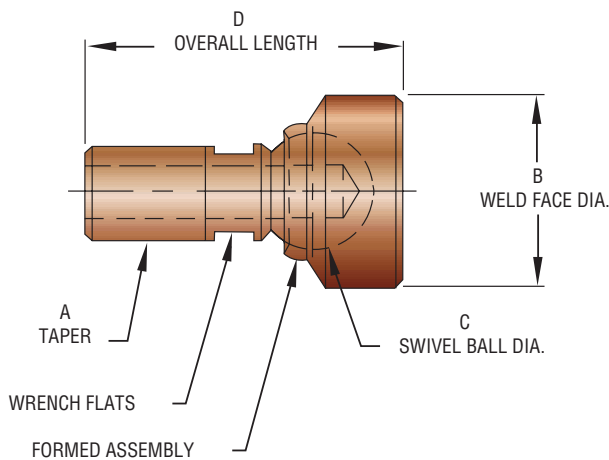
USE 2 FOR CLASS 2  
 USE 3 FOR CLASS 3

USE 0 IF O-RING REQUIRED ON FORMED ASSEMBLY  
 OMIT 0 IF O-RING NOT REQUIRED

USE SHEA FOR FORMED ASSEMBLY

### Blind Hole

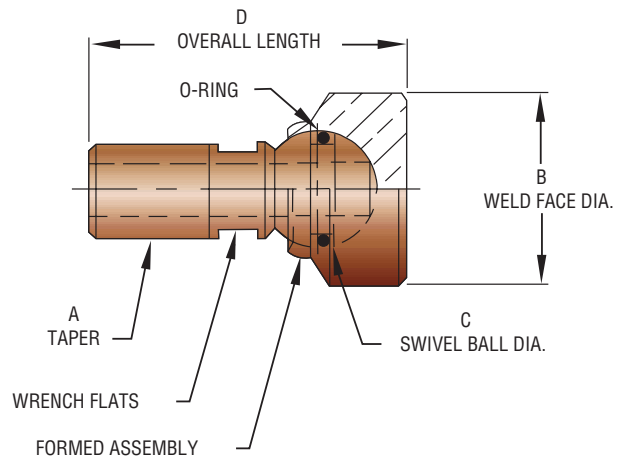
**EXAMPLE:**  
**RW-SHEA25E10075200**



**FIGURE 4-10 (Material RWMA Class 2&3)**

### Thru Hole with O-Ring

**EXAMPLE:**  
**RW-SHEA025E10075200**  
**O-RING**



**FIGURE 4-11 (Material RWMA Class 2&3)**

Dimensions Shown Are: inches (mm)

