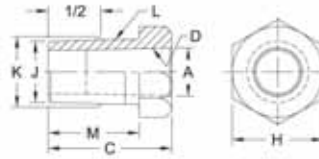
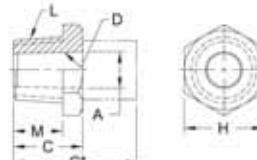


# ADAPTERS

MALE TAPER TO FEMALE TAPER ADAPTERS									
Adapter Part No.	Male Taper			Female Taper		Length Under Head M	Hex. Over Flats H	Overall Length C	
	Size L	Minor Dia. J	Dia. at 1/2 K	Size D	Major Dia. A				
18-741	5 RW	.588	.613	4 RW	.463	7/8	7/8	1-3/16	
18-742	7 RW	.819	.844	5 RW	.625	1-3/16	1	1-1/2	
18-7414	6 RW	.706	.731	5 RW	.625	7/8	1	1-3/16	
18-7415	4 RW	.438	.463	5 RW	.625	5/8	7/8	1-3/4	
18-7416	5 RW	.588	.613	6 RW	.750	7/8	1	2-1/4	

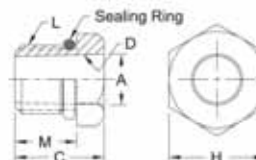


MALE PIPE THREAD TO FEMALE TAPER ADAPTERS							
Adapter Part No.	Male Thd. Size L	Female Taper		Length Under Head M	Hex. Over Flats H	Overall Length C	
		Size D	Major Dia. A				
18-746-07	1/2-14 pipe	4 RW	.463	5/8	1	7/8	
18-747-07	1/2-14 pipe	5 RW	.625	5/8	1	7/8	
18-7465-07	1/2-14 pipe	5 RW Male Cap	.414	9/16	7/8	7/8	
18-748-06	5/8-14 pipe	4 RW	.463	9/16	1	3/4	
18-749-06	5/8-14 pipe	5 RW	.625	9/16	1	3/4	
18-756-09	3/4-14 pipe	4 RW	.463	7/8	1-1/4	1-1/8	
18-757-09	3/4-14 pipe	5 RW	.625	7/8	1-1/4	1-1/8	
18-7576-09	3/4-14 pipe	6 RW	.750	7/8	1-1/4	1-1/8	



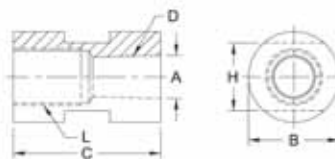
\*Adapters of longer lengths available in 1/8" increments upon request

MALE THREAD TO FEMALE TAPER ADAPTERS							
Adapter Part No.	Male Thd. Size L	Female Taper		Length Under Head M	Hex or Dia. Over Flats H	Overall Length C	Sealing Ring Part No.
		Size D	Major Dia. A				
18-750	5/8-18	4 RW	.463	9/16	7/8 Hex	13/16	18-10060-11
18-751	5/8-18	5 RW	.625	9/16	1 Hex	1-11/16	18-10060-11
18-755*	3/4-10	5 RW	.625	9/16	1 Dia.	1-9/16	18-10060-12
18-770	7/8-14	4 RW	.463	5/8	1 Hex	13/16	18-76460
18-771	7/8-14	5 RW	.625	5/8	1 Hex	13/16	18-76460
18-7743	1-14	5/8-18 Thd.	-	5/8	1-1/4 Hex	1	18-10060-17
18-785	1-14	4 RW	.463	9/16	1-1/4 Hex	13/16	18-10060-17
18-786	1-14	5 RW	.625	9/16	1-1/4 Hex	13/16	18-10060-17
18-7863	1-14	6 RW	.750	3/4	1-1/4 Hex	1-3/4	18-10060-17
18-787	1-14	7 RW	.875	3/4	1-1/4 Hex	2-1/8	18-10060-17
18-7875	1-14	5 RW	.625	9/16	1-1/4 Dia.	11/16	18-10060-17
18-7876	1-14	6 RW	.750	5/8	1-1/4 Dia.	7/8	18-10060-17



\*This part has 3/4" wrench flats

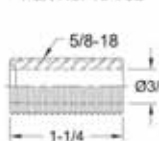
FEMALE THREAD TO FEMALE TAPER ADAPTERS						
Adapter Part No.	Female Thd. Size L	Female Taper		Outside Dia. B	Over Wrench Flats H	Overall Length C
		Size D	Major Dia. A			
18-753	5/8-18	4 RW	.475	1	3/4	1-5/8
18-754	5/8-18	5 RW	.625	1	3/4	1-5/8
18-7591	3/4-10	4 RW	.463	1-1/4 Hex.	1-1/4	1-3/4
18-7592	3/4-10	5 RW	.625	1-1/4 Hex.	1-1/4	1-3/4



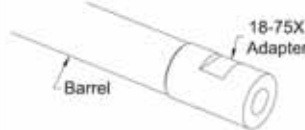
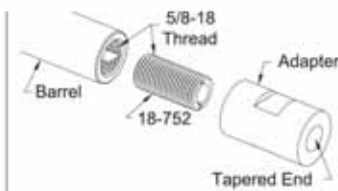
See page 6 for Metric Conversions  
See page 7 for Taper Dimensions  
See page 34 for ejector type adapters

## CONVERSION FROM 5/8-18 THREAD INTO 4, 5, 6, RW TAPER

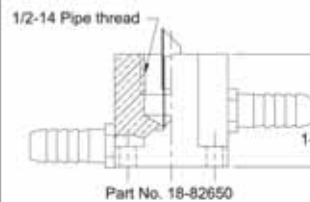
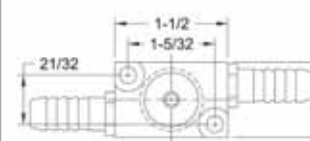
Part No. 18-752



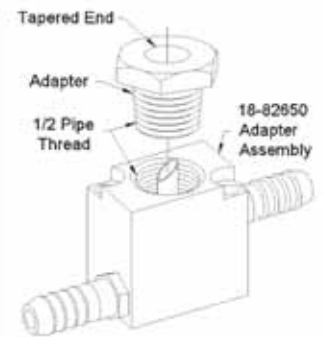
Threaded adapter used with tapered adapter to convert holder to use tapered electrodes.



## CONVERSION FROM THREADED ADAPTER INTO 4, 5, 6, RW TAPER



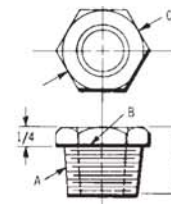
Part No. 18-82650



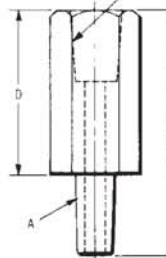
# TIPS ADAPTERS

A Pipe Thread or Taper	B Taper Socket	C Body Size	D Body Length	E Over-All Length	Description	Part Number
1/2-14 NPT	4RW	1" Hex	1/4	7/8	AD-124-.8	190-1408
			3/8	1	AD-124-1.0	190-1410
			5/8	1-1/4	AD-124-1.2	190-1412
			7/8	1-1/2	AD-124-1.5	190-1415
			1-1/8	1-3/4	AD-124-1.7	190-1417
			1-3/8	2	AD-124-2.0	190-1420
			1-5/8	2-1/4	AD-124-2.2*	
			1-7/8	2-1/2	AD-124-2.5	190-1425
			2-1/8	2-3/4	AD-124-2.7*	
			2-3/8	3	AD-124-3.0	190-1430
			2-5/8	3-1/4	AD-124-3.2*	
			2-7/8	3-1/2	AD-124-3.5	190-1435
			3-1/8	3-3/4	AD-124-3.7*	
			3-3/8	4	AD-124-4.0	190-1440
4-3/8	5	AD-124-5.0*				
1/2-14 NPT	5RW	1" Hex	1/4	7/8	AD-125-.8	190-1508
			3/8	1	AD-125-1.0	190-1510
			5/8	1-1/4	AD-125-1.2	190-1512
			7/8	1-1/2	AD-125-1.5	190-1515
			1	1-5/8	AD-125-1.6*	
			1-1/8	1-3/4	AD-125-1.7	190-1517
			1-3/8	2	AD-125-2.0	190-1520
			1-5/8	2-1/4	AD-125-2.2*	
			1-7/8	2-1/2	AD-125-2.5	190-1525
			2-1/8	2-3/4	AD-125-2.7*	
			2-3/8	3	AD-125-3.0	190-1530
			2-5/8	3-1/4	AD-125-3.2*	
			2-7/8	3-1/2	AD-125-3.5	190-1535
			3-1/8	3-3/4	AD-125-3.7*	
3-3/8	4	AD-125-4.0	190-1540			
3-7/8	4-1/2	AD-125-4.5	190-1545			
5/8-14 NPT	4RW	1" Hex	1/4	7/8	AD-584-.8	190-2408
			3/8	1	AD-584-1.0	
			7/8	1-1/2	AD-584-1.5*	
			1-3/8	2	AD-584-2.0*	
5/8-14 NPT	5RW	1" Hex	1/4	7/8	AD-585-.8	190-2508
			3/8	1	AD-585-1.0*	190-2510
			5/8	1-1/4	AD-585-1.2	190-2512
			7/8	1-1/2	AD-585-1.5	190-2515
			1-1/8	1-3/4	AD-585-1.7	190-2517
			1-3/8	2	AD-585-2.0*	
			1-7/8	2-1/2	AD-585-2.5*	
			2-3/8	3	AD-585-3.0*	
			3-3/8	4	AD-585-4.0*	
			3/4-14 NPT	5RW	1.25 Hex	3/16
7/16	1-3/8	AD-345-1.3*				
9/16	1-1/2	AD-345-1.5				190-3515
13/16	1-3/4	AD-345-1.7				190-3517
1-1/16	2	AD-345-2.0				190-3520
1-9/16	2-1/2	AD-345-2.5				190-3525
2-1/16	3	AD-345-3.0				190-3530
2-9/16	3-1/2	AD-345-3.5				190-3535
3-1/16	4	AD-345-4.0				190-3540
3-9/16	4-1/2	AD-345-5.0				190-3550
3/4-14 NPT	6RW	1.25 Hex	5/16	1-1/4	AD-346-1.2*	
			7/16	1-3/8	AD-346-1.3	190-3613
			9/16	1-1/2	AD-346-1.5	190-3615
			1-1/16	2	AD-346-2.0	190-3620
			1-9/16	2-1/2	AD-346-2.5	190-3625
			1-13/16	2-3/4	AD-346-2.7*	
			2-1/16	3	AD-346-3.0	190-3630
			2-9/16	3-1/2	AD-346-3.5	190-3635
			3-1/16	4	AD-346-4.0	190-3640
			3-9/16	4-1/2	AD-346-4.5	190-3645
4-1/16	5	AD-346-5.0	190-3650			
3/4-14 NPT	7RW	1.25 Hex	9/16	1-1/2	AD-347-1.5	190-3715
			1-1/16	2	AD-347-2.0	190-3720
			1-9/16	2-1/2	AD-347-2.5	190-3725
			2-1/16	3	AD-347-3.0	190-3730
			2-9/16	3-1/2	AD-347-3.5	190-3735
			3-1/16	4	AD-347-4.0	190-3740
4RW	5RW	1" Hex	1	2	AD-45-2	190-4520
			2	3	AD-45-3	190-4530
			3	4	AD-45-4	190-4540
5RW	4RW	7/8 Hex	1/4	1-1/8	AD-54-1	190-5410
			1	2	AD-54-2	190-5420
			1-1/2	2-1/2	AD-54-2.5*	
			2	3	AD-54-3	190-5430
5RW	5RW	7/8 Hex	1	2	AD-55-2	190-5520
			1-1/2	2-1/2	AD-55-2.5	190-5525
			2	3	AD-55-3*	
			3	4	AD-55-4	190-5540
5RW	6RW	1" Hex	1	2	AD-56-2	190-5620
			1/4	1-1/4	AD-64-1	190-6410
			1/4	1-1/4	AD-65-1	190-6510
			1/4	1-1/2	AD-74-1	190-7410
7RW	5RW	1" Hex	1/4	1	AD-75-1	190-7510
			3/4	2	AD-75-2	190-7520
			2-1/4	3-1/2	AD-75-3.5*	
			2-3/4	4	AD-75-4*	

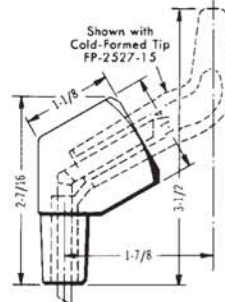
\* Not commonly stocked - other adapters available upon request



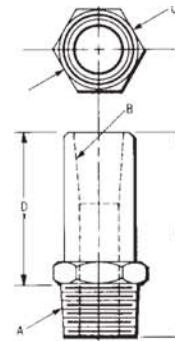
AD-124-.8, AD-125-.8,  
AD-584-.8, AD-585-.8,



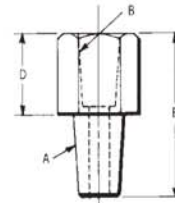
AD-124-1.0, AD-124-4.0,  
AD-125-1.0, AD-125-4.0,  
AD-345-1.0, AD-347-4.0,



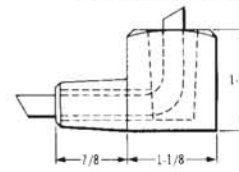
AD-45-2, AD-45-4,  
AD-55-30, for 5 RW Tip,  
Part No. 190-9553



AD-124-1.0, AD-124-4.0,  
AD-125-1.0, AD-125-4.0,  
AD-345-1.0, AD-347-4.0,



AD-54-1, AD-75-2,



AD-55-90, for 5 RW Tip,  
Part No. 190-9559  
AD-54-90, for 4 RW Tip,  
Part No. 190-9549

## STRAIGHT THREADED ADAPTERS FOR MULTI-SPOT BARREL AND CLAMP

	A	B	Description	Part No.	
1.25 Hex	<b>4 RW TAPER - 7/8-14 NF</b>				
	3/8	1-1/8	AD-134-1.1	190-3211	
	1/2	1-1/4	AD-134-1.2	190-3212	
	5/8	1-3/8	AD-134-1.3	190-3213	
	3/4	1-1/2	AD-134-1.5	190-3215	
	1	1-3/4	AD-134-1.7	190-3217	
	1-1/4	2	AD-134-2.0	190-3220	
	1-1/2	2-1/4	AD-134-2.2	190-3222	
	1-3/4	2-1/2	AD-134-2.5	190-3225	
	2-1/4	3	AD-134-3.0	190-3230	
	2-3/4	3-1/2	AD-134-3.5	190-3250	
	1.25 Hex	<b>5 RW TAPER - 7/8-14 NF</b>			
		3/8	1-1/8	AD-135-1.1	190-3311
		1/2	1-1/4	AD-135-1.2	190-3312
5/8		1-3/8	AD-135-1.3	190-3313	
3/4		1-1/2	AD-135-1.5	190-3315	
1		1-3/4	AD-135-1.7	190-3317	
1-1/4		2	AD-135-2.0	190-3320	
1-1/2		2-1/4	AD-135-2.2	190-3322	
1-3/4		2-1/2	AD-135-2.5	190-3325	
2-1/4		3	AD-135-3.0	190-3330	
2-3/4	3-1/2	AD-135-3.5	190-3335		
1.25 Hex	<b>5 RW TAPER - 1-12 NF</b>				
	3/8	1-1/8	AD-105-1.1	190-4311	
	1/2	1-1/4	AD-105-1.2	190-4312	
	5/8	1-3/8	AD-105-1.3	190-4313	
	3/4	1-1/2	AD-105-1.5	190-4315	
	1	1-3/4	AD-105-1.7	190-4317	
	1-1/4	2	AD-105-2.0	190-4320	
1.25 Hex	<b>5 RW TAPER - 1-12 NF</b>				
	1-1/2	2-1/4	AD-105-2.2	190-4322	
	1-3/4	2-1/2	AD-105-2.5	190-4325	
	2	2-3/4	AD-105-2.7	190-4327	
	2-1/4	3	AD-105-3.0	190-4330	
	2-3/4	3-1/2	AD-105-3.5	190-4335	

194-2085  
1-3/8 D.  
Barrel  
Required  
for 1-12 NF  
Adapter

**Resistance Welding Machine & Accessory**

Voice: 269-428-4770 Fax: 269-428-4796

Express Orders: 800-915-9353

Visit Our Website at: [www.resweld.com](http://www.resweld.com)

# STANDARD ADAPTERS

## Cap and Electrode Hex Adapter Pipe Thread

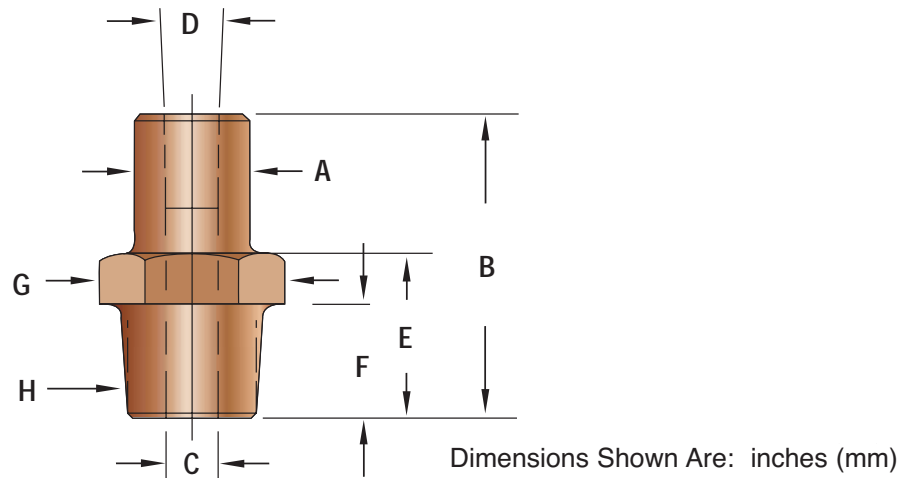


FIGURE 3-11 (Material RWMA Class 2 & 3)

### ELECTRODE ADAPTER CHART

ELECTRODE CODE	4	5	4	5	5	6
A- DIAMETER	0.88 (22.35)	0.94 (23.88)	0.88 (22.35)	0.94 (23.88)	0.94 (23.88)	1.09 (27.69)
B- LENGTH	AS CODED					
LENGTH (Minimum)	0.88 (22.35)	0.88 (22.35)	1.00 (25.40)	1.00 (25.40)	1.12 (28.45)	1.12 (28.45)
C- HOLE DIAMETER	0.42 (10.67)	0.44 (11.18)	0.42 (10.67)	0.44 (11.18)	0.44 (11.18)	0.50 (12.70)
D- TAPER DIAMETER	0.463 (11.76)	0.625 (15.88)	0.463 (11.76)	0.625 (15.88)	0.625 (15.88)	0.750 (19.05)
E- HEX LENGTH	0.88 (22.35)	0.88 (22.35)	1.00 (25.40)	1.00 (25.40)	1.38 (35.05)	1.38 (35.05)
F- THREAD LENGTH	0.62 (15.75)	0.62 (15.75)	0.75 (19.05)	0.75 (19.05)	0.88 (22.35)	0.88 (22.35)
G- HEX	1.00 (25.40)	1.00 (25.40)	1.00 (25.40)	1.00 (25.40)	1.25 (31.75)	1.25 (31.75)
H- THREAD (N.P.T.)	1/2	1/2	5/8	5/8	3/4	3/4

### CAP ADAPTER CHART

ELECTRODE CODE	4	5	4	5	5	6	6-1	7
A- DIAMETER	0.50 (12.70)	0.62 (15.75)	0.50 (12.70)	0.62 (15.75)	0.62 (15.75)	0.75 (19.05)	0.75 (19.05)	0.88 (22.35)
B- LENGTH	AS CODED							
LENGTH (Minimum)	0.88 (22.35)	0.88 (22.35)	1.00 (25.40)	1.00 (25.40)	1.12 (28.45)	1.12 (28.45)	1.12 (28.45)	1.12 (28.45)
C- HOLE DIAMETER	0.28 (7.11)	0.38 (9.65)	0.28 (7.11)	0.38 (9.65)	0.38 (9.65)	0.44 (11.18)	0.44 (11.18)	0.56 (14.22)
D- TAPER DIAMETER	0.313 (7.95)	0.414 (10.52)	0.313 (7.95)	0.414 (10.52)	0.414 (10.52)	0.500 (12.70)	0.562 (14.27)	0.700 (17.78)
E- HEX LENGTH	0.88 (22.35)	0.88 (22.35)	1.00 (25.40)	1.00 (25.40)	1.38 (35.05)	1.38 (35.05)	1.38 (35.05)	1.38 (35.05)
F- THREAD LENGTH	0.62 (15.75)	0.62 (15.75)	0.75 (19.05)	0.75 (19.05)	0.88 (22.35)	0.88 (22.35)	0.88 (22.35)	0.88 (22.35)
G- HEX	1.00 (25.40)	1.00 (25.40)	1.00 (25.40)	1.00 (25.40)	1.25 (31.75)	1.25 (31.75)	1.25 (31.75)	1.25 (31.75)
H- THREAD (N.P.T.)	1/2	1/2	5/8	5/8	3/4	3/4	3/4	3/4

• TO ORDER YOUR SPECIALS USE CODING CHART - SEE PG. 3-14

**Resistance Welding Machine & Accessory**

Voice: 269-428-4770 Fax: 269-428-4796

Express Orders: 800-915-9353

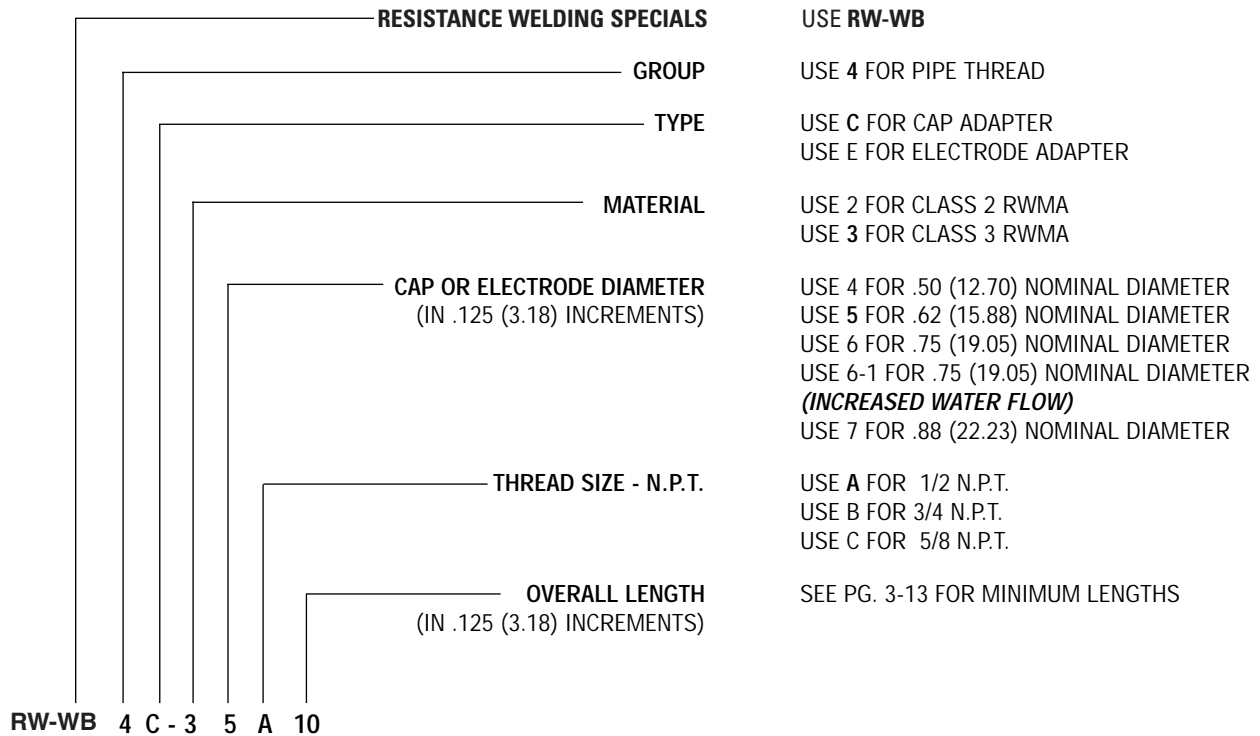
Visit Our Website at: [www.resweld.com](http://www.resweld.com)



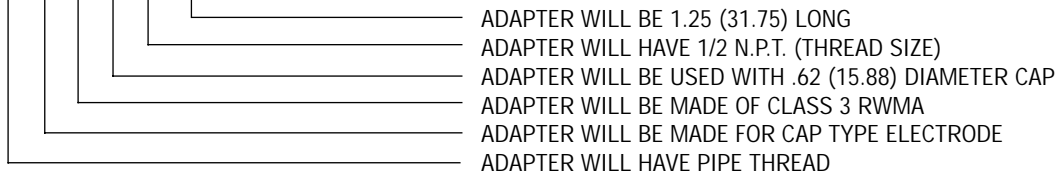
# STANDARD ADAPTERS

## Cap and Electrode Hex Adapter Pipe Thread

### EXAMPLE EXPLANATION CODING



### SAMPLE TYPICAL THREADED ADAPTER CODING



**EXAMPLE: RW-WB4C-35A10**

Dimensions Shown Are: inches (mm)



**Resistance Welding Machine & Accessory**

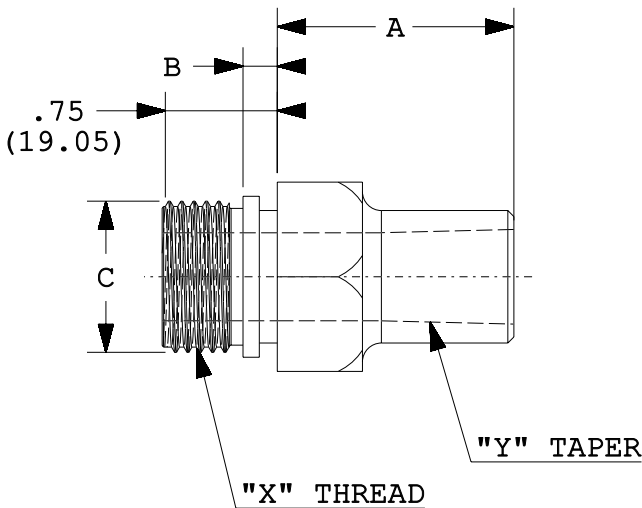
Voice: 269-428-4770 Fax: 269-428-4796

Express Orders: 800-915-9353

Visit Our Website at: [www.resweld.com](http://www.resweld.com)

# STANDARD ADAPTERS

## Hex Adapter Straight Thread



TAPER NO.	Y	Minimum A		
		7/8-14	1-12	1-1/4-12
#4RW	4	0.25	0.25	0.25
#5RW	5	0.25	0.25	0.25
#6RW	6	1.13	0.25	0.25
#7RW	7	1.38	1.25	0.25

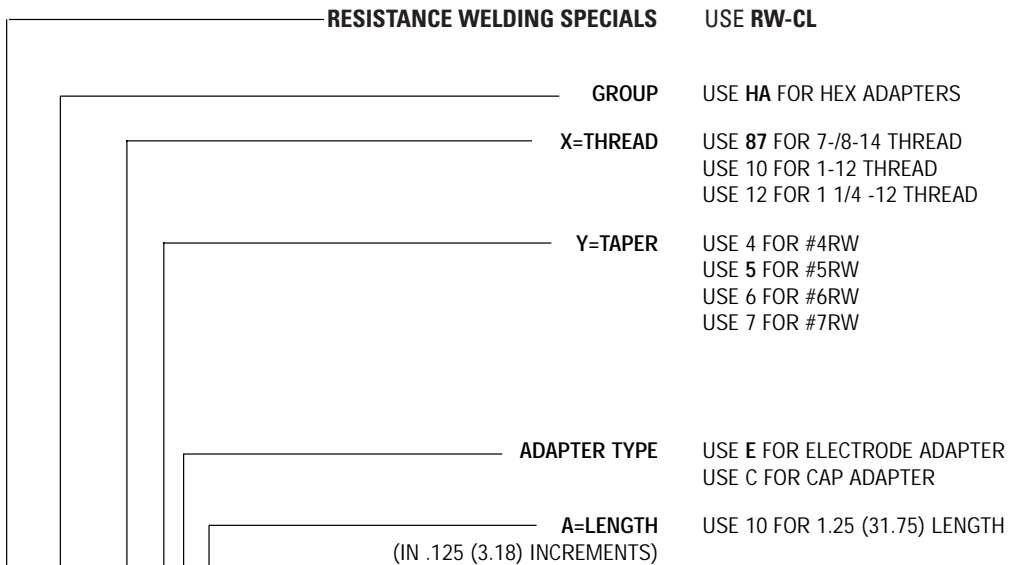
THREAD	"X"	B	C	HEX	O-RING
7/8-14	87	0.25 (6.35)	1 (25.40)	1-1/4	SLORD-117
1-12	10	0.25 (6.35)	1.13 (28.58)	1-1/4	SLORD-119
1-1/4-12	12	0.25 (6.35)	1.38 (34.93)	1-1/2	SLORD-123

Dimensions Shown Are: inches (mm)

### EXAMPLE: RW-CL-HA-875E10

HEX ADAPTER, 7/8-14 THD., #5 RW TAPER, ELECTRODE ADAPTER, LENGTH = 1.25 (31.75).

#### EXAMPLE EXPLANATION CODING



RW-CL HA - 87 5 E 10

## Resistance Welding Machine & Accessory

Voice: 269-428-4770 Fax: 269-428-4796

Express Orders: 800-915-9353

Visit Our Website at: [www.resweld.com](http://www.resweld.com)



# STANDARD ADAPTERS

## Single Bend Female Adapter Shanks For Male Caps

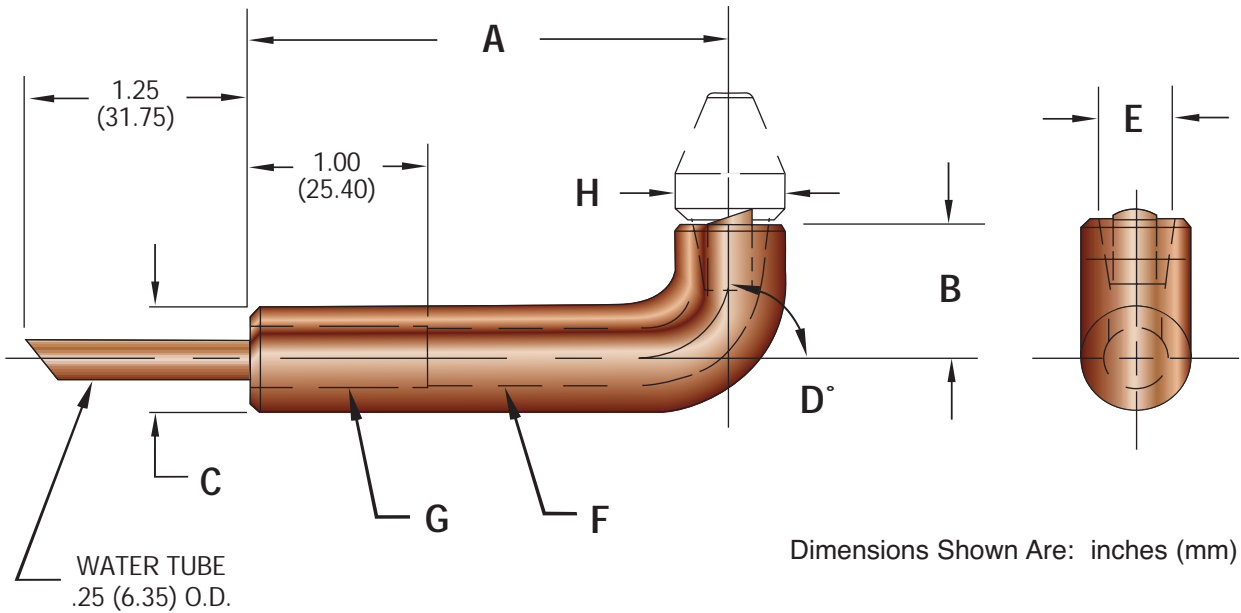


FIGURE 3-8 (Material RWMA Class 3)

### DIMENSION CHARTS

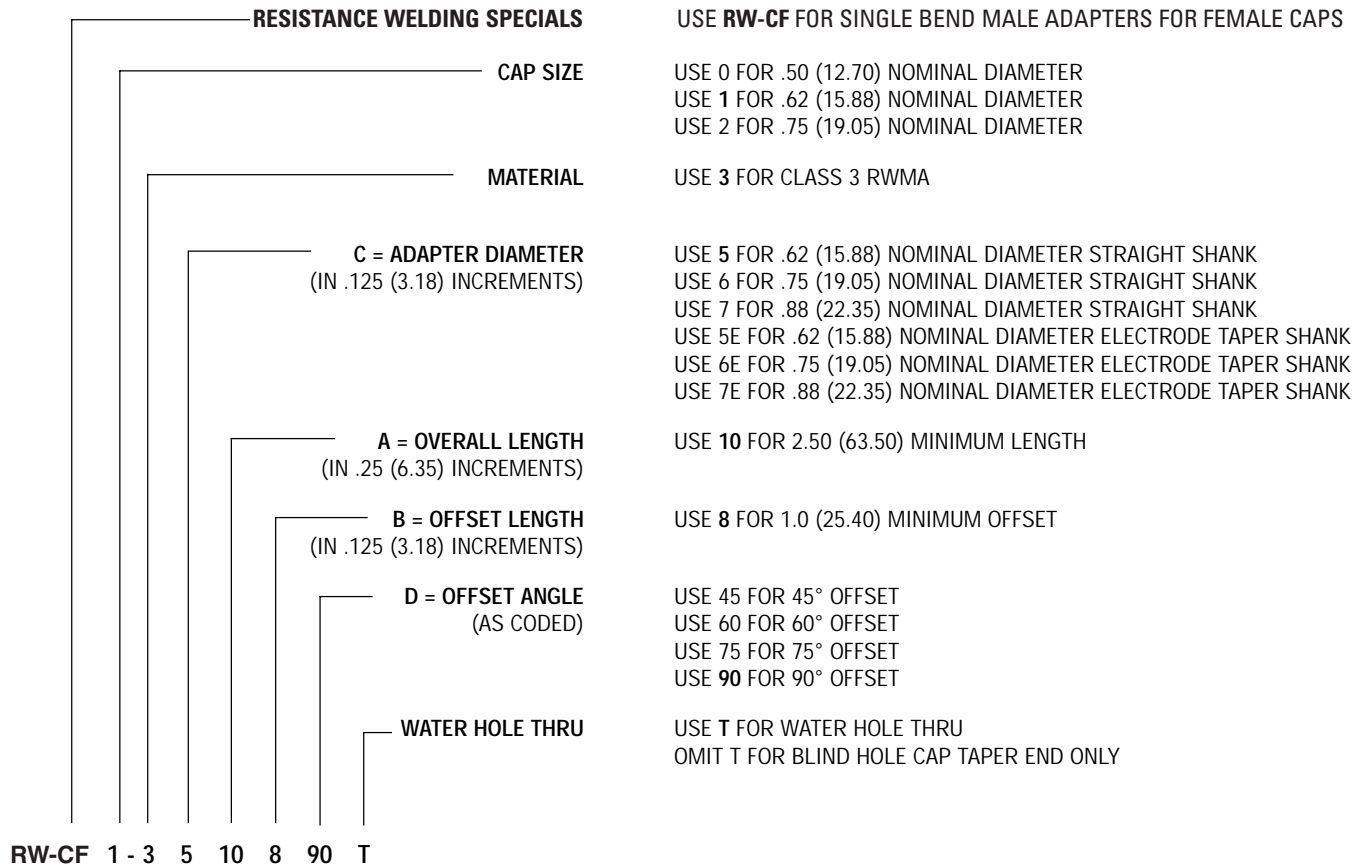
C - DIAMETER	.625 (15.88)	.750 (19.05)	.875 (22.23)	1.00 (25.40)
DIAMETER CODE	5	6	7	8
A - OVERALL LENGTH	AS CODED			
B - OFFSET	AS CODED			
D - DIAMETER	AS CODED			

H - CAP SIZE	.500 (12.70)	.625 (15.88)	.750 (19.05)	.875 (22.23)
E - TAPER DIAMETER	.374 (9.50)	.414 (10.52)	.500 (12.70)	.613 (15.57)
F - HOLE DIAMETER	.28 (7.11)	.34 (8.64)	.44 (11.18)	.50 (12.70)
G - HOLE DIAMETER	.38 (9.65)	.38 (9.65)	.44 (11.18)	.50 (12.70)

# STANDARD ADAPTERS

## Single Bend Female Adapter Shanks For Male Caps

### EXAMPLE EXPLANATION CODING



### SAMPLE TYPICAL CAP ADAPTER CODING

CAP ADAPTER WATER HOLE WILL BE DRILLED THRU  
 CAP ADAPTER OFFSET ANGLE WILL BE 90°  
 CAP ADAPTER OFFSET WILL BE 1.0 (25.40) LONG  
 CAP ADAPTER WILL BE 2.50 (63.50) LONG  
 CAP ADAPTER WILL HAVE .62 (15.88) DIAMETER  
 CAP ADAPTER WILL BE MADE OF CLASS 3 RWMA MATERIAL  
 CAP ADAPTER WILL HAVE A STRAIGHT SHANK  
 CAP ADAPTER WILL BE SINGLE BEND MALE FOR FEMALE CAPS

**EXAMPLE: RW-CF1-3510890T**

Dimensions Shown Are: inches (mm)



**Resistance Welding Machine & Accessory**

Voice: 269-428-4770 Fax: 269-428-4796

Express Orders: 800-915-9353

Visit Our Website at: [www.resweld.com](http://www.resweld.com)

# STANDARD ADAPTERS

## Single Bend Male Adapter Shanks For Female Caps

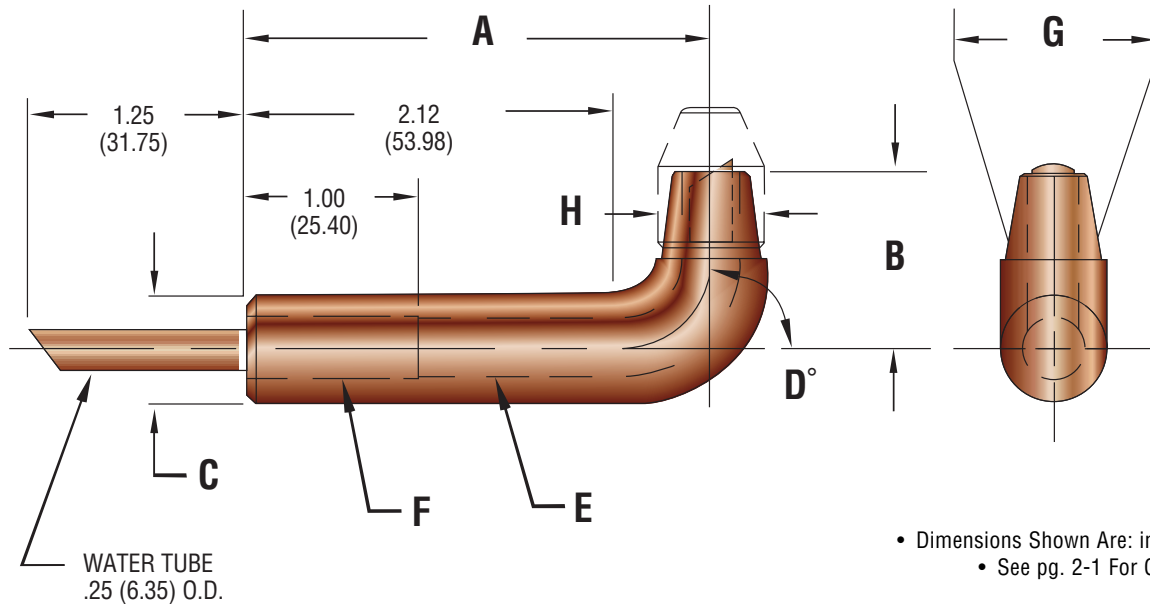


FIGURE 3-7 (Material RWMA Class 3)

### DIMENSION CHARTS

C – DIAMETER DIAMETER CODE	.625 (15.88)	.750 (19.05)	.88 (22.35)
	5	6	7
A – OVERALL LENGTH	AS CODED		
B – OFFSET	AS CODED		
D – ANGLE	AS CODED		

H – CAP SIZE	.500 (12.70)	.625 (15.88)	.750 (19.05)
E – HOLE DIAMETER	.28 (7.11)	.31 (7.87)	.34 (8.64)
F – HOLE DIAMETER	.38 (9.65)	.38 (9.65)	.38 (9.65)
G – TAPER DIAMETER	.402 (10.21)	.502 (12.75)	.633 (16.08)

• TO ORDER YOUR SPECIALS USE CODING CHART - SEE PG. 3-8



**Resistance Welding Machine & Accessory**

Voice: 269-428-4770 Fax: 269-428-4796

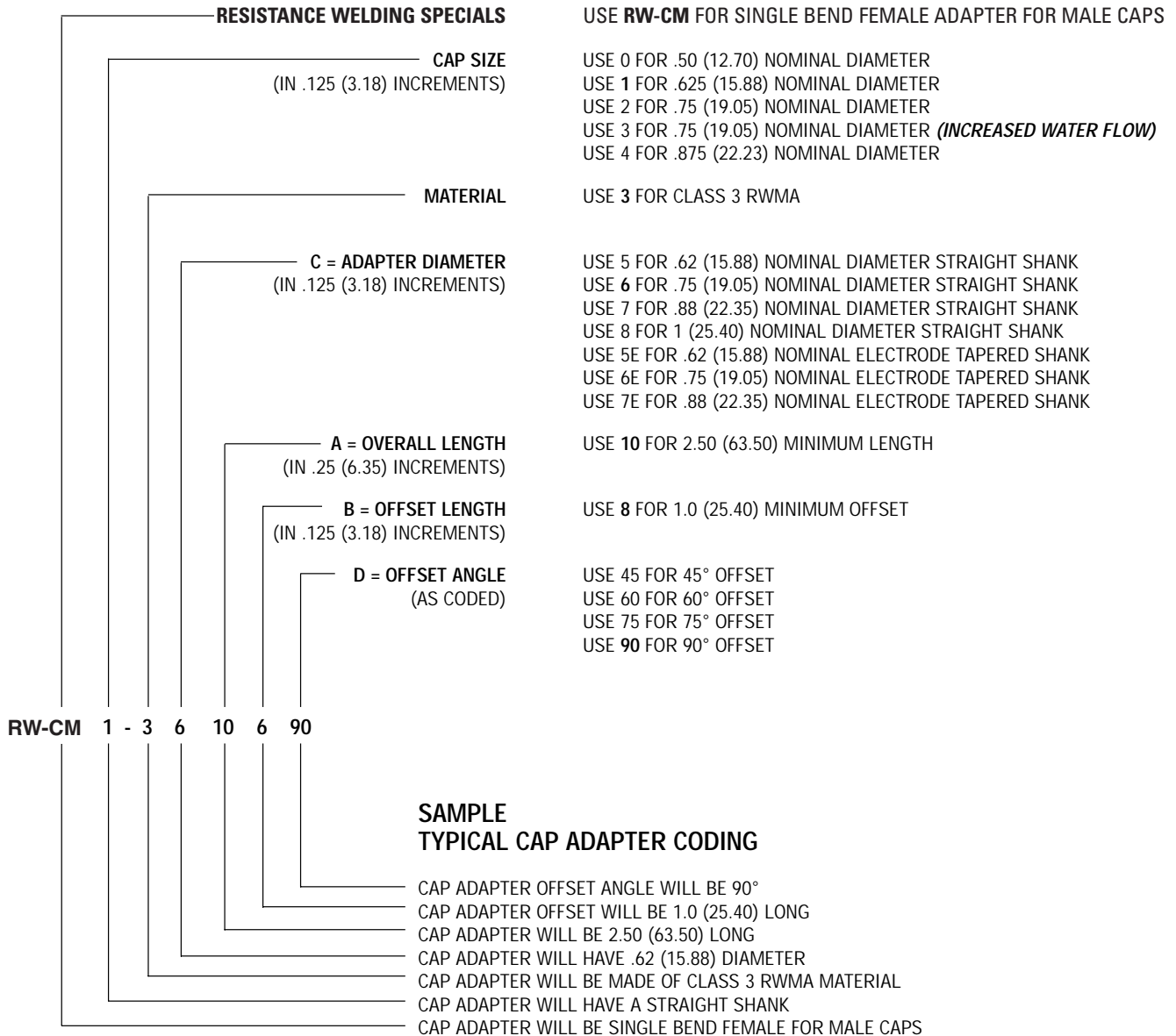
Express Orders: 800-915-9353

Visit Our Website at: [www.resweld.com](http://www.resweld.com)

# STANDARD ADAPTERS

## Single Bend Female Adapter Shanks For Male Caps

### EXAMPLE EXPLANATION CODING



**EXAMPLE: RW-CM1-3610690T**

Dimensions Shown Are: inches (mm)



**Resistance Welding Machine & Accessory**

Voice: 269-428-4770 Fax: 269-428-4796

Express Orders: 800-915-9353

Visit Our Website at: [www.resweld.com](http://www.resweld.com)

# STANDARD ADAPTERS

## J Shape Cap Adapters

**EXAMPLE:**  
RW-CL-JA5-3510166M

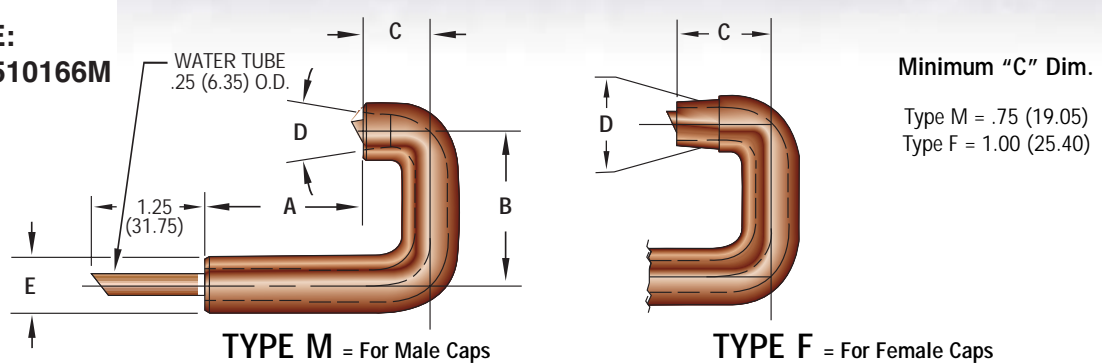
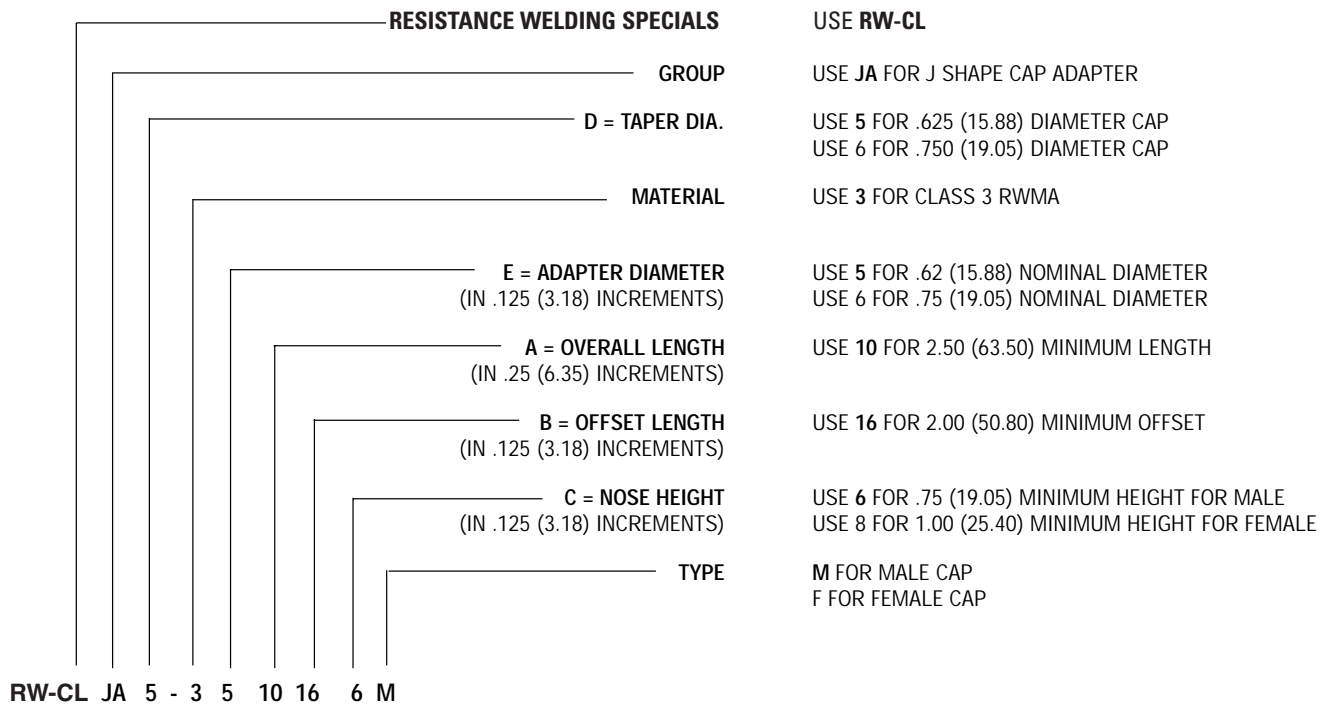


FIGURE 3-9 (Material RWMA Class 3)

- Dimensions Shown Are: inches (mm).
- See pg. 2-1 & 2-2 For Caps

### EXAMPLE EXPLANATION CODING



### SAMPLE TYPICAL J SHAPE CAP ADAPTER CODING

- CAP ADAPTER TYPE WILL BE FOR MALE CAPS
- CAP ADAPTER NOSE WILL BE .75 (19.05) HIGH
- CAP ADAPTER OFFSET WILL BE 2.00 (50.80) LONG
- CAP ADAPTER WILL BE 2.50 (63.50) LONG
- CAP ADAPTER WILL HAVE .62 (15.88) DIAMETER
- CAP ADAPTER WILL BE MADE OF CLASS 3 RWMA MATERIAL
- CAP ADAPTER NOSE WILL BE .625 (15.88) DIAMETER CAP TAPER
- J SHAPE CAP ADAPTER



**Resistance Welding Machine & Accessory**

Voice: 269-428-4770 Fax: 269-428-4796

Express Orders: 800-915-9353

Visit Our Website at: [www.resweld.com](http://www.resweld.com)