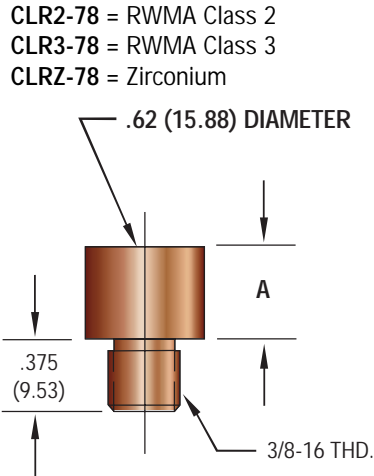


# THREADED ELECTRODES

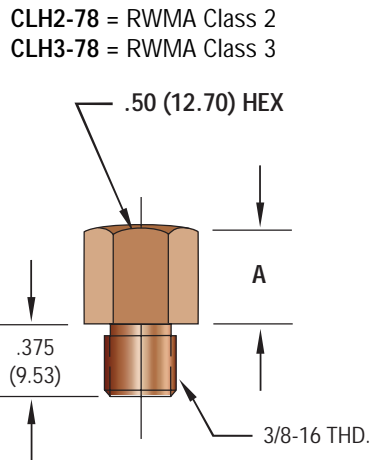
## EXAMPLE- CRWR2-62-AY



ITEM NO.	"A" = HEIGHT
CRWR2-62-31C	.312 (7.92)
CRWR2-62-37C	.375 (9.53)
CRWR2-62-43C	.437 (11.10)
CRWR2-62-50C	.500 (12.70)
CRWR2-62-62C	.625 (15.88)
CRWR2-62-75C	.750 (19.05)
<b>ETC.</b>	<b>See Example</b>

FIGURE 2-5 (Material RWMA Class 2, 3 & Zirconium)

## EXAMPLE- CRWH2-62-AY



"Y" = NOSE DESIGNATION

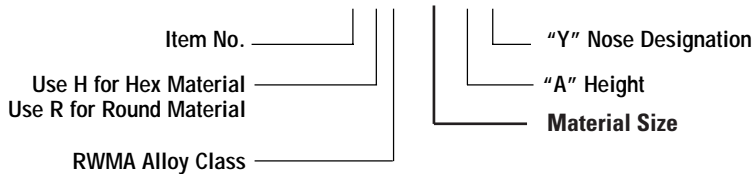
- \* A = Pointed
- \* B = Dome
- \* C = Flat (Shown)
- \* E = Truncated (20°)
- \* F = .62 (15.88) Radius

\* 0.25(6.35) Weld Face Diameter

• Dimensions Shown Are: inches (mm).

FIGURE 2-6 (Material RWMA Class 2 & 3)

**EXAMPLE     .50 (12.70) HEX,    CLASS 3,     "A" + .50 (12.70) HEIGHT,    C + FLAT NOSE**  
**CRWH3-62-50C**



NOTE: Other thread sizes and shapes are available.



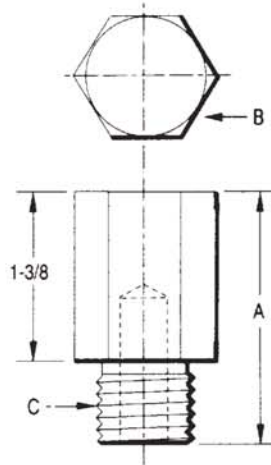
**Resistance Welding Machine & Accessory**

Voice: 269-428-4770    Fax: 269-428-4796

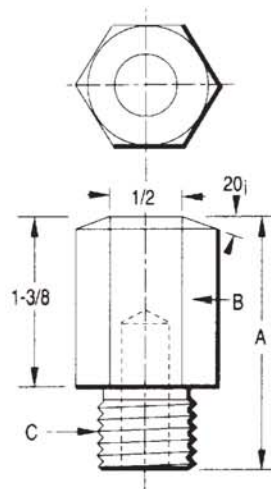
Express Orders: 800-915-9353

Visit Our Website at: [www.resweld.com](http://www.resweld.com)

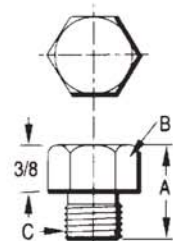
# THREADED TIPS



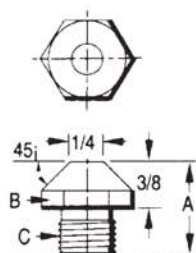
FLAT ELECTRODES				
A Overall Length	B Tip Dia. (Hex)	C Male Thread	Description	Part No.
2	1	5/8-11	5100-11-C	187-5100-11
	1	5/8-18	5100-18-C	187-5100-18
	1	3/4-11	5100-10-C	187-5100-10
	1-1/4	3/4-10	5125-10-C	187-5125-10



TRUNCATED ELECTRODES				
A Overall Length	B Tip Dia. (Hex)	C Male Thread	Description	Part No.
2	1	5/8-11	5100-11-E	188-5100-11
	1	5/8-18	5100-18-E	188-5100-18
	1	3/4-10	5100-10-E	188-5100-10
	1-1/4	3/4-10	5125-10-E	188-5125-10



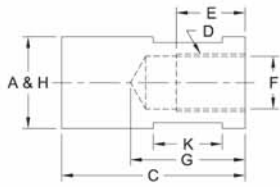
"C" NOSE ELECTRODES				
A Overall Length	B Tip Dia. (Hex)	C Male Thread	Description	Part No.
3/4	5/8	7/16-14	5062-14-C	187-5062-14
3/4	5/8	3/8-16	5062-16-C	187-5062-16



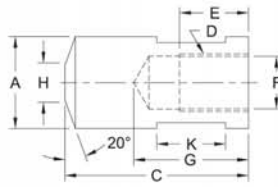
"E" NOSE ELECTRODES				
A Overall Length	B Tip Dia. (Hex)	C Male Thread	Description	Part No.
3/4	5/8	7/16-14	5062-14-E	188-5062-14



# THREADED ELECTRODES



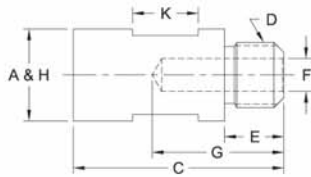
FEMALE FLAT



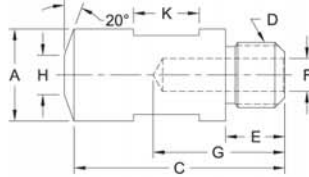
FEMALE TRUNCATED

## CMW® 3 FEMALE THREADED ELECTRODES

CMW® 3 PART No.	Type	O.A.L. C	Thread D	Major Dia. A	Thread Depth E	Water Hole Depth G	Water Hole Dia. F	Over Wrench Flats	Wrench Flat Length K	Welding Face Dia. H
336508	Female Flat	2	5/8-18	1	3/4	1-1/4	37/64	7/8	3/4	1
336510				1-1/4				3/4	1-1/4	
336512				1-1/2				7/8	1-1/2	
326508	Female Truncat.	2	5/8-18	1	3/4	1-1/4	37/64	7/8	3/4	3/8
326510				1-1/4				3/4	1/2	
326512				1-1/2				7/8	5/8	



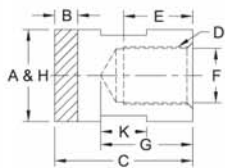
MALE FLAT



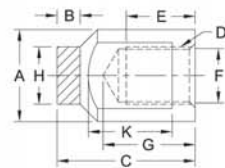
MALE TRUNCATED

## CMW® 3 MALE THREADED ELECTRODES

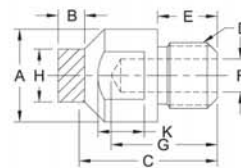
CMW® 3 PART No.	Type	O.A.L. C	Thread D	Major Dia. A	Thread Depth E	Water Hole Depth G	Water Hole Dia. F	Over Wrench Flats	Wrench Flat Length K	Welding Face Dia. H	
330507	Male Flat	2	5/8-18	7/8	9/16	1-1/4	5/16	3/4	5/8	7/8	
330508			5/8-18	1	9/16		5/16	7/8	5/8	1	
335506			5/8-11	3/4	15/32		5/16	5/8	1/2	3/4	3/4
335507			5/8-11	7/8	15/32		5/16	3/4	3/4	7/8	
335508	Male Truncat.	2	3/4-10	1	5/8	1-1/4	3/8	7/8	7/8	1	
335510			3/4-10	1-1/4	5/8		3/8	1	3/4	1-1/4	
335512			7/8-9	1-1/2	3/4		1/2	1-1/4	7/8	1-1/2	
325506			5/8-11	3/4	15/32		5/16	5/8	1/2	1/4	
325507	5/8-11	7/8	15/32	5/16	5/8	1-1/4	5/16	5/8	5/16		
325508	3/4-10	1	5/8	3/8	5/8	3/8	7/8	5/8	3/8		
325510	3/4-10	1-1/4	5/8	3/8	5/8	3/8	1	3/4	1/2		



ELKONITE® FACED FEMALE FLAT



ELKONITE® FACED FEMALE CENTERED



ELKONITE® FACED MALE CENTERED

## ELKONITE® FACED MALE & FEMALE THREADED ELECTRODES

ELKONITE® 10W3 PART No.	Type	O.A.L. C	Thread D	Major Dia. A	Thread Depth E	Water Hole Depth G	Water Hole Dia. F	Over Wrench Flats	Wrench Flat Length K	Welding Face Dia. H	ELKONITE® Thickness B
636308	Female Flat	1-1/2	5/8-18	1	3/4	1	37/64	7/8	1/2	1	1/4
636310				1-1/4				1/2	1-1/4		
636312				1-1/2				7/8	1-1/2		
626308	Female Centered	1-1/2	5/8-18	1	3/4	1	37/64	7/8	13/16	5/8	
626310				1-1/4				11/16	5/8		
620307	Male Centered	1-1/2	5/8-18	7/8	9/16	1	5/16	3/4	3/4	1/2	1/4
625206		1-1/4	5/8-11	3/4	15/32	7/8	5/16	5/8	3/4	1/2	3/16
625308		1-5/8	3/4-10	1	5/8	1-3/16	3/8	7/8	7/8	5/8	1/4

FEMALE FLAT



FEMALE TRUNCATED



MALE FLAT



MALE TRUNCATED



ELKONITE® FACED FEMALE FLAT



ELKONITE® FACED FEMALE CENTERED



ELKONITE® FACED MALE CENTERED



Resistance Welding Machine & Accessory

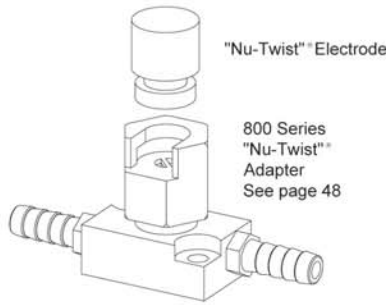
Voice: 269-428-4770 Fax: 269-428-4796

Express Orders: 800-915-9353

Visit Our Website at: [www.resweld.com](http://www.resweld.com)

# "NU-TWIST"<sup>®</sup> THREADED SOCKET (OR BUTTON) MALE THREADED BUTTON ELECTRODES

## "NU-TWIST"<sup>®</sup> ELECTRODES



- No tapers or threads
- Can be extracted with a simple turn of hexagon locking nut
- Any contour in electrode face can be located or relocated in a given position
- Water circulated to end of electrode for maximum cooling
- Silver plated contact surfaces on electrode and base for maximum conductivity
- Provides a simple, low-cost electrode for most applications
- Electrodes shown can be modified with contours to provide faces required for most resistance welding applications

		FLAT FACE "NU-TWIST" <sup>®</sup> ELECTRODE				TYPE 0 FLAT & 0 TRUNCATED "NU-TWIST" <sup>®</sup> ELECTRODE						
Size	Type	Electrode Part No.		Body Dia.	Weld Face Dia.	Overall Length	Adapter Clearance	Water Hole Dia.	Water Hole Depth	Electrode Seat Dia.	Elect. Ext. From Adapt.	
		CMW <sup>®</sup> 3	CMW <sup>®</sup> 100	H	A	C	E	F	G	J	K	
1	0 Flat	338750	538750	1/2	1/2	3/4	--	1/4	3/8	.625	1/2	
		338030	538030	1/2	1/2	1-1/2	--	1/4	1-1/8	.625	1-1/4	
1	0 Trunc.	378750	578750	1/2	1/4	3/4	--	1/4	3/8	.625	1/2	
		378030	578030	1/2	1/4	1-1/2	--	1/4	1-1/8	.625	1-1/4	
1	Flat	338751	538751	5/8	5/8	3/4	5/16	1/4	3/8	.625	1/2	
		338031	538031	5/8	5/8	1-1/2	5/16	1/4	1-1/8	.625	1-1/4	
2	Flat	338012	538012	1-1/4	1-1/4	1	5/8	1/2	1/2	1.125	1/2	
		338052	538052	1-1/4	1-1/4	2	5/8	1/2	1-1/2	1.125	1-1/2	
4	Flat	338014	538014	1-3/4	1-3/4	1	5/8	3/4	1/2	1.625	1/2	
		338054	538054	1-3/4	1-3/4	2	5/8	3/4	1-1/2	1.625	1-1/2	

Special face contours, lengths and diameters available on special order

## THREADED SOCKET (OR BUTTON) ELECTRODES

(USE WITH 900 AND 950 SERIES HOLDERS ON PAGE 51)  
ALL DIMENSIONS WITH AN (\*) ARE COMMON TO EACH CAP IN A HORIZONTAL LINE.

FLAT FACE	TRUNCATED FACE	RADIUS FACE	OFFSET FACE	30° OFFSET FACE
<p>CMW<sup>®</sup> 28 18-970 CMW<sup>®</sup> 3 18-980 CMW<sup>®</sup> 100 18-990</p>	<p>CMW<sup>®</sup> 28 18-971 CMW<sup>®</sup> 3 18-981 CMW<sup>®</sup> 100 18-991</p>	<p>CMW<sup>®</sup> 28 18-972 CMW<sup>®</sup> 3 18-982 CMW<sup>®</sup> 100 18-992</p>	<p>CMW<sup>®</sup> 28 18-973 CMW<sup>®</sup> 3 18-983 CMW<sup>®</sup> 100 18-993</p>	<p>CMW<sup>®</sup> 28 18-974 CMW<sup>®</sup> 3 18-984 CMW<sup>®</sup> 100 18-994</p>



**Resistance Welding Machine & Accessory**

Voice: 269-428-4770 Fax: 269-428-4796

Express Orders: 800-915-9353

Visit Our Website at: [www.resweld.com](http://www.resweld.com)

