



Electromotive Tip Dresser

KYOKUTOH Tip Dresser exclusive for automation robot

**electromotive
AUTO TIP DRESSER**



Available for various spot welding. Tip dresser promoted full automation of production line.

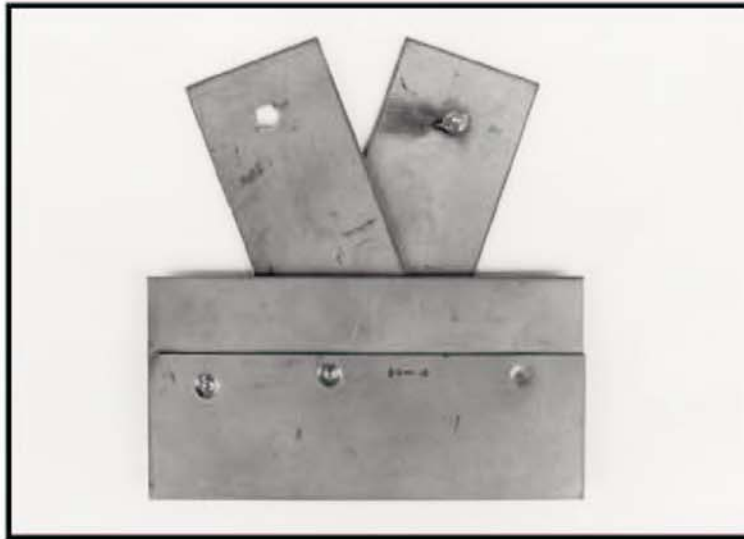


Resistance Welding Machine & Accessory

Voice: 269-428-4770 Fax: 269-428-4796

Express Orders: 800-915-9353

Visit Our Website at: www.resweld.com



Saves time

easy operation

saves expensive parts

**Easily adjusted to drill
through top panel only**

DRILL BIT #	HOLE DIAMETER	USED WITH
BPD-6.5S	6.5 MM	TH-902
BPD-8S	8 MM	TH-902
BPD-6.5	6.5 MM	MANUAL
BPD-8	8 MM	MANUAL



**TURN BACKING ARM EITHER LEFT OR RIGHT TO
ALLOW ACCESS TO DIFFICULT TO REACH WELDS.**

**Electrode
dressers** INC

Resistance Welding Machine & Accessory

Voice: 269-428-4770 Fax: 269-428-4796

Express Orders: 800-915-9353

Visit Our Website at: www.resweld.com



Dress spotwelding electrodes quickly, simply, and on the spot

Locate our bench-top machine next to your spotwelding line or as an off-line workstation.

It works quickly: **the entire sequence can be accomplished in six seconds.**

Operation is uncomplicated and the time saved working on site is substantial.

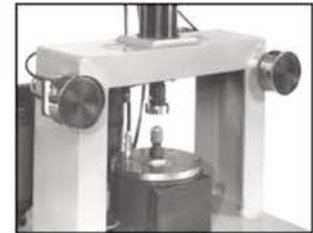
Operation Sequence for Model DT-1AF



Step 1. Operator places female cap on expanding mandrel.



Step 2. Machine is cycled by pushing both palm buttons. Air motor begins rotating and feeding downward. At the same time, the mandrel expands, gripping the electrode. The cutter moves onto the electrode, dressing it until its shape has been



Step 3. Operator then releases palm buttons and cutter returns to rest position.

Features

- Compact (occupies less than five cubic feet)
- Operates with air logic
- Adjustable speed and force of downward cycle
- Self-feed motor drives cutter
- Electrodes are locked into position by means of a pneumatically controlled mandrel or collet
- Lightweight-less than 90 lbs
- Heavy-duty frame for rigidity

Specifications

Pneumatics

- Aro self-feed drill motor*
- 2" stroke (Model DT-1AF)
3" stroke (Model DT-1AM)
- 1450 RPM
- 8.5 ft/lb torque

Air logic

- Aro palm buttons, valves, filter and regulator

Table construction

- Table base is machined steel plate
- Table frame is heavy-duty machined steel

Dimensions

- 12" x 12" x 1" table
- 40" overall height (including air motor)
- 19" overall width (including controls)
- 12" depth
- 85 lbs net weight (dry)

Air requirements

- 90 PSI at inlet of machine for maximum efficiency

**Electrode
dressers**^{INC}
MACHINE & ACCESSORY

Resistance Welding Machine & Accessory

Voice: 269-428-4770 Fax: 269-428-4796

Express Orders: 800-915-9353

Visit Our Website at: www.resweld.com